



- No Separate PC Required
- Up to 8 Speaker Configuration
- Headset/Footswitch Operation
- Full Audio Accessory Connectivity
- NENA Telephone Interface
- Multi-featured Instant Recall
- USB Interfaced Audio System
- Integrated Intel® Dual Core Processor

A Complete Dispatch Workstation

The Mindshare MAXPlus Dispatch Console Processor is a complete dispatch workstation that integrates a PC and audio processor components into a single device. Ideal for radio dispatch applications requiring 24/7 operation, this system comes in a sturdy metal enclosure and provides all functions required by Public Safety Answering Points (PSAP) and other dispatch services.

COMPLETE AUDIO SYSTEM

With interfaces to all common audio accessories, the MAXPlus Dispatch Console Processor satisfies the unique requirements of a dispatch console while providing each dispatcher the flexibility to easily configure their sound setup. In addition, this system supports electret and dynamic microphones and includes interfaces for two relay outputs as well as select and mix 600 Ohm balanced recorder outputs (that can be sent to a recorder via VoIP over the network).

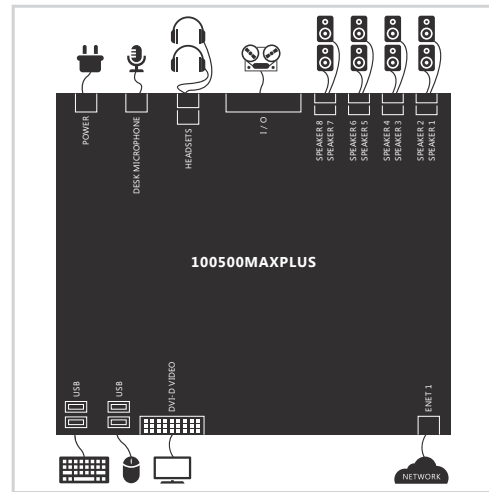
PC LEVERAGES INDUSTRY-STANDARD COM EXPRESS SBC

An Intel® i3 COM Express single board computer (SBC) provides the user interface and connects to the audio system via USB to perform all VoIP communications. Run on a Linux platform, experience a more stable operating environment that better enables the multi-tasking requirements of high-reliability communication systems. This integrated PC also features ample storage, external USB ports, and a network connection that connects the entire system to the network via internal network switch.



DETAILS

- USB interfaced audio system
- 9 output channels, 4 microphones
- 8 speaker outputs (1 select, 7 unselect)
- Dynamic and electret microphone interfaces
- Dual simultaneous headset/handset interfaces
- Echo cancelled NENA telephone interface
- 2 footswitch inputs
- 2 auxiliary relay connections
- 2 auxiliary diode blocked digital inputs
- Single power supply voltage
- SATA – CFast
- 4GB DDR3 RAM memory
- Linux OS



TOP VIEW

SPECIFICATIONS

Weight	3.8 lbs.
Dimensions	9.5" W x 8.25" D x 2" H
Operating Temperatures	0 to +50 °C
Power Requirements	15 VDC at 5.2 A maximum
Network I/O	1 x RJ45 10/100 Mbps Ethernet
Graphics	Intel HD Graphics 520 (Skylake GT2) x86/MMX/SSE2
Processor	Intel Core™ i3-6100U @ 2.3 GHz x 4
Memory	4 GB DDR4 non-ECC unbuffered SO-DIMM RAM
Storage	64 GB CFast (industry-certified hard drive)
Video Outputs	2 x display ports
Peripheral I/O	4 x USB 3.0; 2 x USB 2.0; 1 x USB 2.0 (internal)
Operating System	Debian GNU/Linux 10 (Buster)
Analog Audio I/O	8 x speaker outputs; 2 x headset interfaces; 1 x desk microphone input (dynamic or electret); 1 x auxiliary microphone input; 1 x NENA headset interface; 2 x footswitch inputs
Relay Outputs	125 VDC, 150 VAC maximum voltage; 1A maximum switching current; 1A maximum carrying current; 30 W (DC), 60 VA (AC) maximum switch power
Frequency Response	+1/-3 dB, 300 to 3000 Hz except at the transmit tone notch frequency
Noise Floor	45 dB below operating levels
Codec Gains	0 to +42 dB in 1.5 dB steps (inputs), -42 to 0 dB in 1.5 dB steps (outputs)
Programmable Gains	Desk microphone: 0 dB or +28 dB Headset microphone: 0 dB or -20 dB NENA RX: 0 dB or -20 dB

Specifications subject to change without notice. Check css-mindshare.com for downloads/updates.



ACCESSORIES



Headset Jack

The 100501 MJ operator headset jack allows the use of standard dual-prong 4- and 6-conductor operator headsets. Housed in a sturdy, compact metal enclosure with easily accessed volume control, up to 2 can be used with each audio interface.

Weight	3.8 lbs.
Dimensions	4" W x 6.25" D x 2.25"H
Connection	Cat5 cable + earth ground



MSPA Speakers

Unlike typical 2 speaker installations at each console position for selected and unselected channels, the Mindshare interface supports up to eight for greater flexibility in creating monitor groups in separate speakers. Front panel features: level control, 2-band EQ control (low and high), power, compressor, and signal presence indicator.

Weight	2.1 lbs.
Dimensions	4.5" W x 5" H
Audio Connection	Single 0.25" TRS cable
Audio Power	Up to 25 watts
DC Power Input	12-18 VDC



Desk Microphones

Weight	1 lb
Dimensions	3" W x 7" D x 7" H
Directivity	Omni-directional
Sensitivity	-73 dB
Freq. Response	200 Hz to 5 KHz
Cable	6'



Weight	1.6 lbs.
Dimensions	4.25" W x 6.5" D x 12.5" H
Directivity	Electret
Sensitivity	12mV/Pa +/-3 dB
Freq. Response	100 Hz to 14 KHz @ -10dB
Gooseneck Length	19"
Cable	6'



CUSTOMIZE YOUR INTERFACE

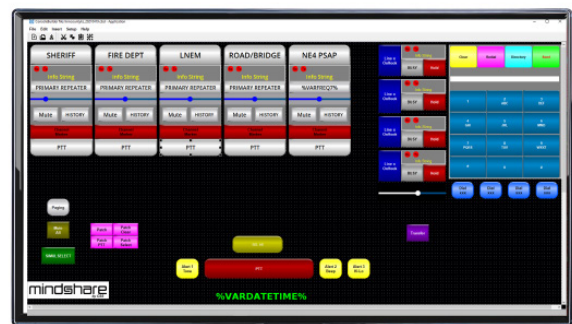
A dispatcher's learning curve with a new system can be costly. Mindshare's customizable operator GUI dramatically reduces training time and gets dispatchers ramped up quickly. Because every module is comprised of individual components, virtually any configuration can be implemented to support any user or system requirements (including replicating legacy systems).

Standard Console Features

- Select, Simul-Select, Mute, PTT & Volume Control
- Alerts
- 2-Tone & DTMF Paging
- Instant Recall Recording (No Additional Cost)
- Auxiliary I/O Control
- Radio Emergency Signaling
- Cross-Patching
- Cross-Muting
- Receiving Blocking
- Link Monitoring & Hot Standby Functionality
- Speaker Routing Control
- Channel Change
- ID Aliasing
- Encryption Key Selection
- Group Calling
- Private Calling*
- Radio Check, Stun, Revive, Listen/Monitor, Status Messaging, Status Querying, Call Alerting*
- Scan

Mindshare SIP Telephony Interface Features

- Known Compatibility with Cisco, Avaya, Asterisk, NEC & Panasonic. (All others subject to compatibility)
- Multiple Extensions
- Voicemail
- Caller ID
- Hold
- Transfer
- Mute
- Hookflash
- Speed Dialing
- Phonebook



A dispatcher's console environment can be completely customized with the Mindshare operator GUI software

